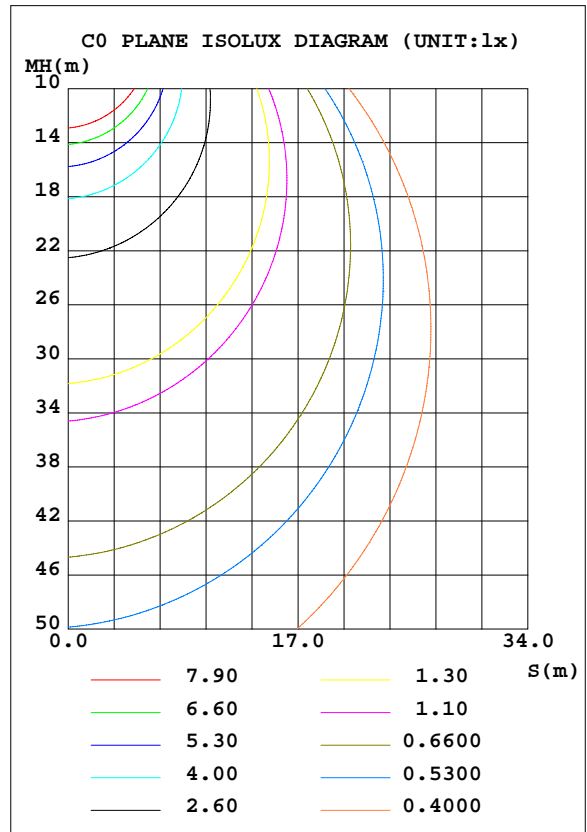
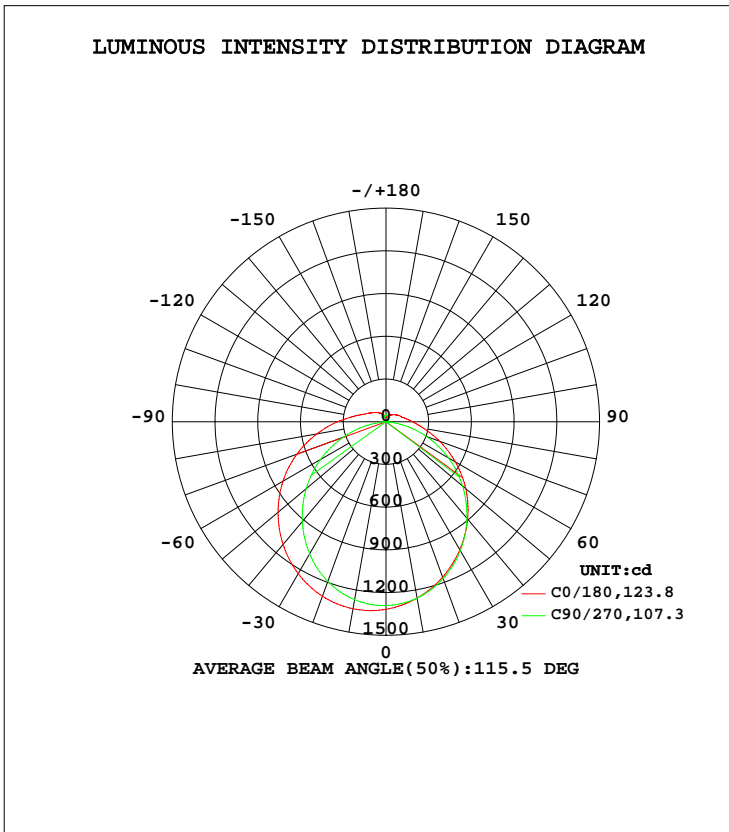


LUMINAIRE PHOTOMETRIC TEST REPORT

NAME: O2TP-FIST-R36W-1.2M	TYPE:LED	WEIGHT:
SPEC.:	DIM.:	SERIAL No.:1
MFR.: EVERFINE	SUR.:	Shielding Angle:

DATA OF LAMP		PHOTOMETRIC DATA Eff: 134.59 lm/W			
MODEL	O2TP-FIST-R36W	Imax(cd)	1334	S/MH(C0/180)	1.39
NOMINAL POWER(W)	33.4	LOR(%)	100.0	S/MH(C90/270)	1.24
RATED VOLTAGE(V)	230.0	TOTAL FLUX(lm)	4488.9	η UP, DN(C0-180)	4.9,43.4
NOMINAL FLUX(lm)	4488.94	CIE CLASS	SEMI-D.	η UP, DN(C180-360)	5.4,46.3
LAMPS INSIDE	1	η up(%)	10.3	CIBSE SHR NOM	1.25
TEST VOLTAGE(V)	230	η down(%)	89.7	CIBSE SHR MAX	1.35



C Range: 0 - 360DEG
 C Interval: 22.5DEG
 Test Speed: HIGH
 Temperature:25.3DEG
 Operators:DAMIN
 Test Date:23 September 2017

γ Range: 0 - 180DEG
 γ Interval: 1.0DEG
 Test System:EVERFINE GO-2000A_V1 SYSTEM V2.0.351
 Humidity:65.0%
 Test Distance:7.580m [K=1.0000]
 Remarks:

ZONAL FLUX DIAGRAM

ZONAL FLUX DIAGRAM:

γ	C0	C45	C90	C135	C180	C225	C270	C315	γ	Φ zone	Φ total	%lum,lamp
10	1257	1243	1257	1283	1334	1304	1269	1238	0- 10	122.4	122.4	2.73,2.73
20	1162	1147	1173	1232	1304	1259	1194	1148	10- 20	350.1	472.5	10.5,10.5
30	1038	1016	1045	1137	1232	1169	1072	1023	20- 30	529.5	1002	22.3,22.3
40	892.0	861.6	884.5	1009	1125	1042	914.4	871.3	30- 40	639.3	1641	36.6,36.6
50	731.3	691.6	702.6	856.6	990.0	888.6	731.5	702.3	40- 50	670.3	2312	51.5,51.5
60	561.8	512.9	506.7	689.2	835.2	717.7	531.7	522.8	50- 60	624.3	2936	65.4,65.4
70	401.1	337.7	303.1	513.7	665.8	537.2	322.4	345.5	60- 70	513.1	3449	76.8,76.8
80	270.0	196.2	101.3	340.7	493.3	358.3	109.4	202.0	70- 80	361.8	3811	84.9,84.9
90	187.4	117.5	2.368	200.4	339.9	212.8	2.401	121.3	80- 90	216.5	4027	89.7,89.7
100	139.5	79.54	5.719	122.9	227.6	130.2	6.022	82.97	90-100	133.1	4160	92.7,92.7
110	112.0	62.05	10.84	94.68	159.8	98.92	11.54	66.58	100-110	92.64	4253	94.7,94.7
120	93.56	49.03	16.20	82.15	125.6	85.19	17.22	52.48	110-120	71.05	4324	96.3,96.3
130	78.25	41.08	21.25	72.72	101.4	74.73	22.46	43.54	120-130	55.36	4379	97.6,97.6
140	64.04	34.92	26.16	65.24	83.87	66.26	26.88	37.26	130-140	41.78	4421	98.5,98.5
150	53.61	31.68	33.42	58.78	67.61	57.60	33.19	34.08	140-150	30.43	4452	99.2,99.2
160	46.51	36.16	39.75	53.04	54.60	51.51	39.55	36.25	150-160	20.83	4472	99.6,99.6
170	35.68	40.69	44.49	48.49	39.15	46.84	44.28	41.35	160-170	12.36	4485	99.9,99.9
180	31.79	44.21	47.20	46.46	32.09	44.40	47.61	46.47	170-180	4.103	4489	100,100
DEG	LUMINOUS INTENSITY:cd									UNIT:lm		

Conical surface Flux(90deg): 1977.5 lm

%lum = 44.1%
%lamp = 44.1%

Conical surface Flux(120deg): 2935.9 lm

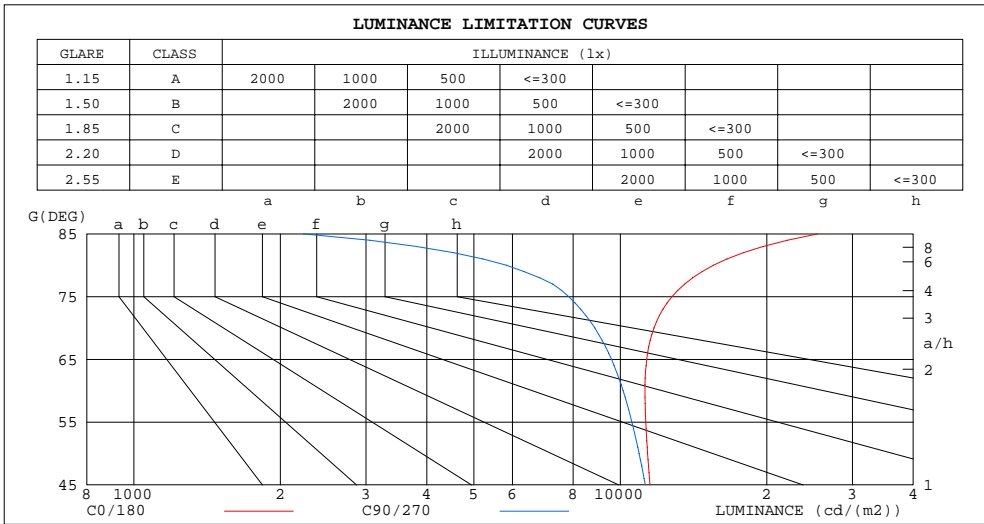
%lum = 65.4%
%lamp = 65.4%

C Range: 0 - 360DEG
C Interval: 22.5DEG
Test Speed: HIGH
Temperature:25.3DEG
Operators:DAMIN
Test Date:23 September 2017

γ Range: 0 - 180DEG
γ Interval: 1.0DEG
Test System:EVERFINE GO-2000A_V1 SYSTEM V2.0.351
Humidity:65.0%
Test Distance:7.580m [K=1.0000]
Remarks:

LUMINANCE LIMITATION CURVES

NAME: 1.2M三防灯	TYPE:LED	WEIGHT:
SPEC.:	DIM.:	SERIAL No.:1
MFR.: EVERFINE	SUR.:	Shielding Angle:



LUMINANCE cd/(m2)		
G(DEG)	C0/180	C90/270
85	25480	2230
80	15546	5832
75	12772	7832
70	11726	8863
65	11330	9592
60	11236	10133
55	11280	10565
50	11376	10930
45	11504	11252

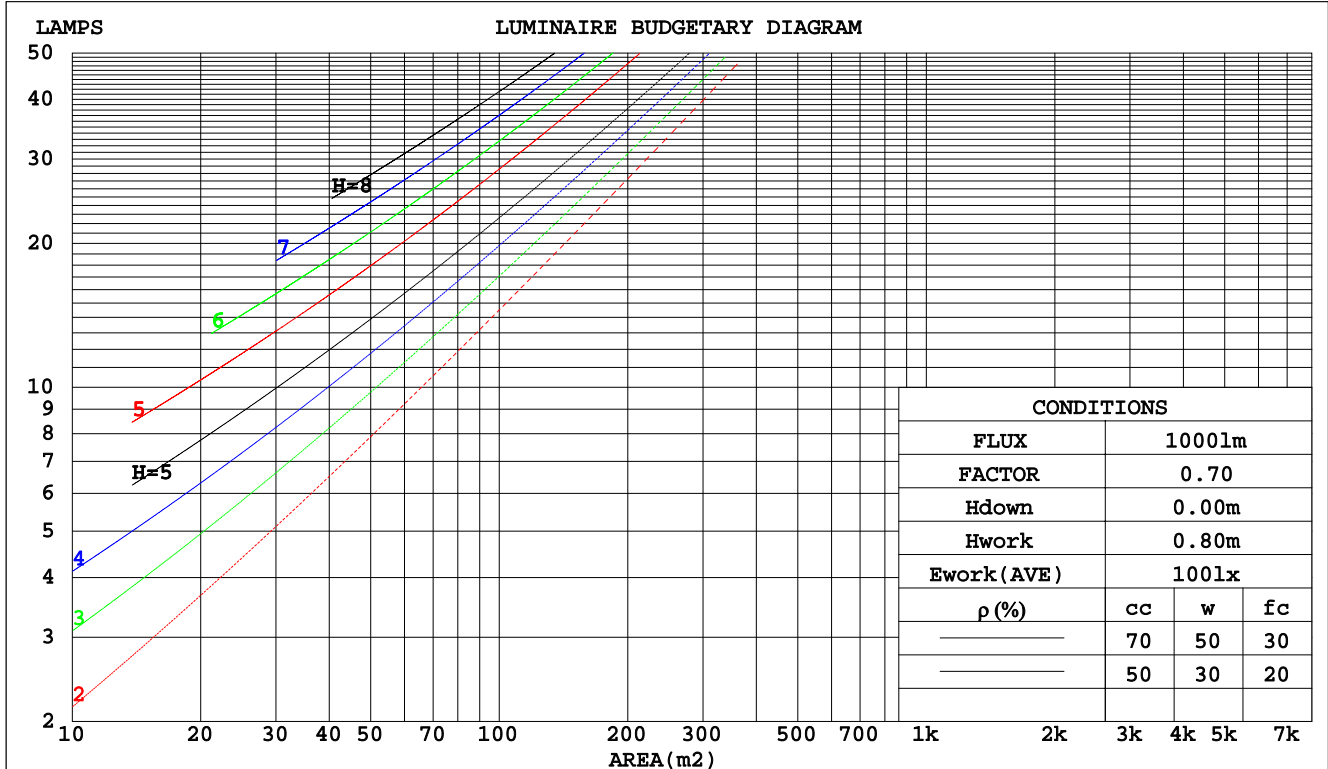
C Range: 0 - 360DEG
 C Interval: 22.5DEG
 Test Speed: HIGH
 Temperature: 25.3DEG
 Operators: DAMIN
 Test Date: 23 September 2017

γ Range: 0 - 180DEG
 γ Interval: 1.0DEG
 Test System: EVERFINE GO-2000A_V1 SYSTEM V2.0.351
 Humidity: 65.0%
 Test Distance: 7.580m [K=1.0000]
 Remarks:

CU AND LUMINAIRE BUDGETARY ESTIMATE DIAGRAM

NAME: 1.2M三防灯	TYPE:LED	WEIGHT:
SPEC.:	DIM.:	SERIAL No.:1
MFR.: EVERFINE	SUR.:	Shielding Angle:

pcc	80%			70%			50%			30%			10%			0
pw	50%	30%	10%	50%	30%	10%	50%	30%	10%	50%	30%	10%	50%	30%	10%	0
pfc	20%			20%			20%			20%			20%			0
RCR	RCR:Room Cavity Ratio						Coefficients of Utilization(CU)									
0.0	1.17	1.17	1.17	1.13	1.13	1.13	1.05	1.05	1.05	.99	.99	.99	.93	.93	.93	.90
1.0	.99	.95	.90	.96	.92	.88	.90	.86	.83	.84	.81	.79	.79	.77	.75	.72
2.0	.86	.79	.72	.83	.76	.71	.78	.72	.68	.73	.68	.64	.69	.65	.62	.59
3.0	.75	.66	.60	.73	.65	.58	.68	.62	.56	.64	.58	.54	.60	.56	.52	.49
4.0	.66	.57	.50	.64	.56	.49	.60	.53	.47	.57	.51	.46	.53	.48	.44	.41
5.0	.59	.50	.43	.57	.49	.42	.54	.47	.41	.51	.44	.39	.48	.43	.38	.36
6.0	.53	.44	.37	.52	.43	.37	.49	.41	.36	.46	.39	.34	.43	.38	.33	.31
7.0	.48	.39	.33	.47	.38	.32	.44	.37	.31	.42	.35	.30	.40	.34	.30	.27
8.0	.44	.35	.29	.43	.34	.29	.40	.33	.28	.38	.32	.27	.36	.31	.26	.24
9.0	.40	.32	.26	.39	.31	.26	.37	.30	.25	.35	.29	.24	.34	.28	.24	.22
10.0	.37	.29	.24	.36	.28	.23	.34	.27	.23	.33	.27	.22	.31	.26	.22	.20



C Range: 0 - 360DEG
 C Interval: 22.5DEG
 Test Speed: HIGH
 Temperature: 25.3DEG
 Operators: DAMIN
 Test Date: 23 September 2017

γ Range: 0 - 180DEG
 γ Interval: 1.0DEG
 Test System: EVERFINE GO-2000A_V1 SYSTEM V2.0.351
 Humidity: 65.0%
 Test Distance: 7.580m [K=1.0000]
 Remarks:

WEC AND CCEC

NAME: 1.2M三防灯	TYPE:LED	WEIGHT:
SPEC.:	DIM.:	SERIAL No.:1
MFR.: EVERFINE	SUR.:	Shielding Angle:

ρcc	80%			70%			50%			30%			10%			0
ρw	50%	30%	10%	50%	30%	10%	50%	30%	10%	50%	30%	10%	50%	30%	10%	0
ρfc	20%			20%			20%			20%			20%			0
RCR	RCR:Room Cavity Ratio						Wall Exitance Coefficients(WEC)									
0.0																
1.0	.347	.197	.062	.337	.192	.061	.317	.182	.058	.300	.173	.055	.283	.164	.053	
2.0	.311	.171	.052	.302	.166	.051	.285	.158	.049	.269	.151	.047	.254	.144	.045	
3.0	.282	.150	.045	.273	.146	.044	.258	.140	.042	.243	.133	.041	.230	.127	.039	
4.0	.256	.133	.039	.249	.130	.039	.235	.125	.037	.222	.119	.036	.210	.114	.035	
5.0	.235	.120	.035	.228	.117	.034	.216	.112	.033	.204	.108	.032	.193	.103	.031	
6.0	.217	.109	.031	.211	.106	.031	.199	.102	.030	.188	.098	.029	.178	.094	.028	
7.0	.201	.099	.028	.195	.097	.028	.185	.093	.027	.175	.090	.026	.166	.086	.025	
8.0	.187	.091	.026	.182	.090	.025	.172	.086	.025	.163	.083	.024	.155	.080	.023	
9.0	.175	.084	.024	.170	.083	.023	.161	.080	.023	.153	.077	.022	.146	.074	.021	
10.0	.164	.079	.022	.160	.077	.022	.152	.074	.021	.144	.072	.020	.137	.069	.020	

ρcc	80%			70%			50%			30%			10%			0
ρw	50%	30%	10%	50%	30%	10%	50%	30%	10%	50%	30%	10%	50%	30%	10%	0
ρfc	20%			20%			20%			20%			20%			0
RCR	RCR:Room Cavity Ratio						Ceiling Cavity Exitance Coefficients(CCEC)									
0.0	.269	.269	.269	.230	.230	.230	.157	.157	.157	.090	.090	.090	.029	.029	.029	
1.0	.262	.235	.210	.224	.202	.181	.153	.139	.125	.088	.080	.073	.028	.026	.024	
2.0	.254	.211	.175	.218	.182	.151	.149	.126	.106	.086	.073	.062	.028	.024	.020	
3.0	.247	.194	.153	.211	.168	.132	.145	.116	.093	.084	.068	.055	.027	.022	.018	
4.0	.239	.181	.138	.205	.157	.119	.141	.109	.084	.082	.064	.050	.026	.021	.016	
5.0	.231	.171	.127	.199	.148	.111	.137	.104	.078	.079	.061	.046	.026	.020	.015	
6.0	.224	.163	.120	.193	.141	.104	.133	.099	.074	.077	.058	.044	.025	.019	.014	
7.0	.217	.156	.114	.187	.136	.099	.129	.095	.070	.075	.056	.042	.024	.018	.014	
8.0	.211	.151	.110	.181	.131	.096	.125	.092	.068	.073	.054	.040	.024	.018	.013	
9.0	.204	.146	.106	.176	.127	.093	.122	.089	.066	.071	.053	.039	.023	.017	.013	
10.0	.199	.142	.104	.171	.123	.091	.119	.087	.064	.069	.051	.038	.022	.017	.013	

C Range: 0 - 360DEG
 C Interval: 22.5DEG
 Test Speed: HIGH
 Temperature:25.3DEG
 Operators:DAMIN
 Test Date:23 September 2017

γ Range: 0 - 180DEG
 γ Interval: 1.0DEG
 Test System:EVERFINE GO-2000A_V1 SYSTEM V2.0.351
 Humidity:65.0%
 Test Distance:7.580m [K=1.0000]
 Remarks:

UGR(Unified Glare Rating) Table

NAME: 1.2M三防灯					TYPE:LED					WEIGHT:				
SPEC.:					DIM.:					SERIAL No.:1				
MFR.: EVERFINE					SUR.:					Shielding Angle:				
ceiling/cavity	0.7	0.7	0.5	0.5	0.3	0.7	0.7	0.5	0.5	0.3				
walls	0.5	0.3	0.5	0.3	0.3	0.5	0.3	0.5	0.3	0.3				
working plane	0.2	0.2	0.2	0.2	0.2	0.2	0.2	0.2	0.2	0.2				
Room dimensions	Viewed crosswise					Viewed endwise								
x = 2H y = 2H	20.2	21.6	20.6	22.0	22.4	19.7	21.2	20.1	21.5	21.9				
3H	22.0	23.4	22.5	23.8	24.2	21.1	22.4	21.6	22.9	23.3				
4H	23.0	24.2	23.4	24.7	25.1	21.6	22.9	22.1	23.3	23.8				
6H	24.0	25.1	24.4	25.6	26.1	22.0	23.1	22.4	23.6	24.1				
8H	24.5	25.6	25.0	26.1	26.6	22.0	23.1	22.5	23.6	24.1				
12H	25.1	26.2	25.6	26.7	27.2	22.0	23.1	22.5	23.5	24.1				
4H 2H	20.7	22.0	21.2	22.4	22.9	20.3	21.6	20.8	22.0	22.5				
3H	22.8	23.8	23.3	24.3	24.8	21.9	23.0	22.4	23.5	24.0				
4H	23.9	24.9	24.4	25.4	25.9	22.6	23.6	23.1	24.1	24.6				
6H	25.0	25.9	25.6	26.5	27.1	23.0	23.9	23.5	24.4	25.0				
8H	25.7	26.5	26.3	27.1	27.7	23.1	23.9	23.7	24.5	25.1				
12H	26.5	27.2	27.1	27.8	28.4	23.1	23.9	23.7	24.4	25.1				
8H 4H	24.1	24.9	24.7	25.5	26.1	23.0	23.8	23.5	24.3	24.9				
6H	25.5	26.2	26.1	26.8	27.5	23.6	24.3	24.2	24.9	25.5				
8H	26.4	27.0	27.0	27.6	28.3	23.8	24.4	24.4	25.0	25.7				
12H	27.4	27.9	28.0	28.6	29.3	23.9	24.5	24.6	25.1	25.8				
12H 4H	24.1	24.9	24.7	25.4	26.1	23.1	23.8	23.6	24.4	25.0				
6H	25.6	26.2	26.2	26.8	27.5	23.8	24.4	24.4	25.0	25.7				
8H	26.5	27.1	27.2	27.7	28.4	24.1	24.7	24.8	25.3	26.0				
Variations with the observer position at spacings:														
S = 1.0H	+ 0.1 / - 0.1					+ 0.1 / - 0.2								
1.5H	+ 0.2 / - 0.3					+ 0.1 / - 0.3								
2.0H	+ 0.2 / - 0.3					+ 0.2 / - 0.2								

CIE Pub.117 Corrected 4489 lm Total Lamp Luminous Flux.(8log(F/F0) = 5.2)

C Range: 0 - 360DEG
 C Interval: 22.5DEG
 Test Speed: HIGH
 Temperature:25.3DEG
 Operators:DAMIN
 Test Date:23 September 2017

γ Range: 0 - 180DEG
 γ Interval: 1.0DEG
 Test System:EVERFINE GO-2000A_V1 SYSTEM V2.0.351
 Humidity:65.0%
 Test Distance:7.580m [K=1.0000]
 Remarks:

UTILIZATION FACTORS TABLE

NAME: 1.2M三防灯	TYPE:LED	WEIGHT:
SPEC.:	DIM.:	SERIAL No.:1
MFR.: EVERFINE	SUR.:	Shielding Angle:

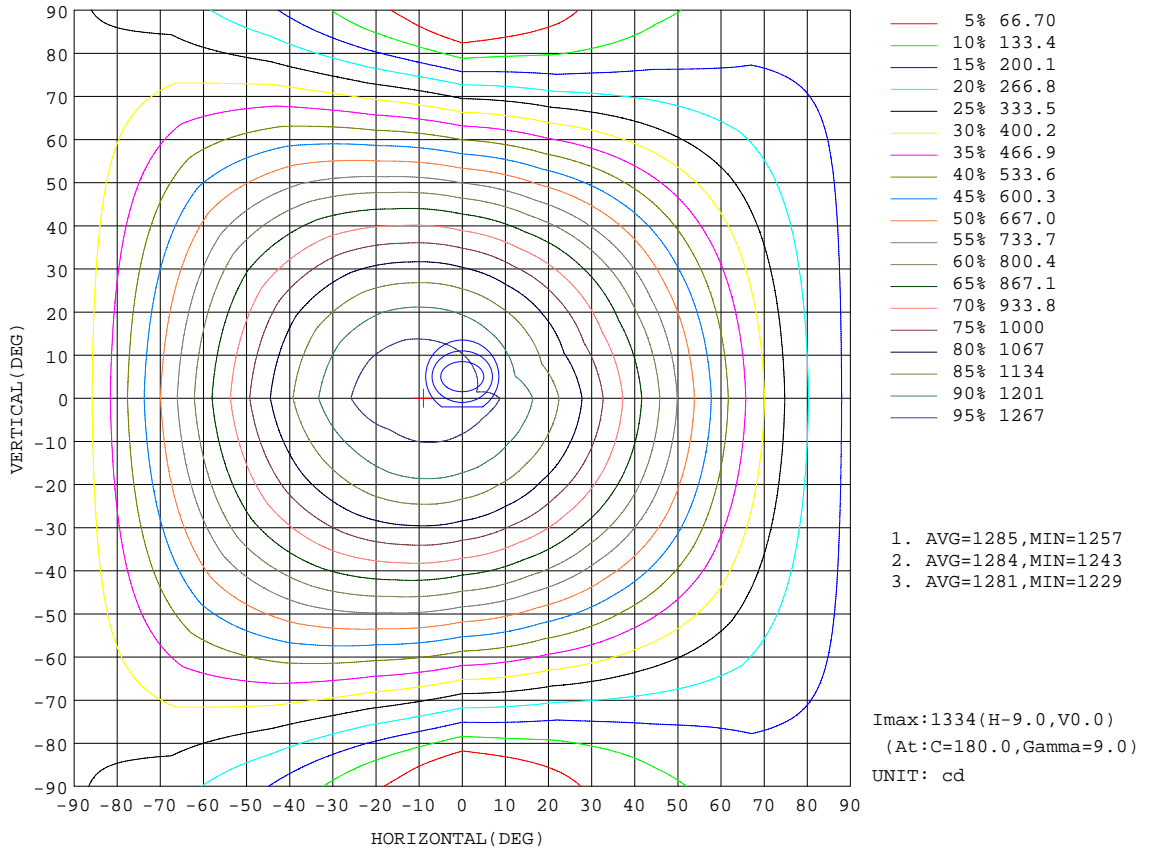
REFLECTANCE										
Ceiling	0.8	0.8	0.8	0.7	0.7	0.7	0.5	0.5	0.5	0
Walls	0.7	0.5	0.3	0.7	0.5	0.3	0.7	0.5	0.3	0
Working plane	0.2	0.2	0.2	0.2	0.2	0.2	0.2	0.2	0.2	0
ROOM INDEX	UTILIZATION FACTORS(PERCENT) $k(RI) \times RCR = 5$									
k = 0.60	53	41	34	52	40	33	50	40	33	26
0.80	62	50	42	61	49	42	58	48	41	34
1.00	70	58	50	69	57	50	65	58	49	41
1.25	77	66	58	75	65	57	72	62	56	47
1.50	82	71	63	80	70	63	76	67	61	52
2.00	89	79	72	87	78	71	82	74	69	59
2.50	93	84	77	91	82	76	85	79	73	62
3.00	97	89	82	94	87	81	88	82	77	66
4.00	101	94	89	98	92	87	92	87	83	71
5.00	104	98	93	101	95	91	94	90	86	74
ROOM INDEX	UF(total)									Direct
According to DIN EN 13032-2 2004			Suspended				SHRNOM = 1.25			

C Range: 0 - 360DEG
 C Interval: 22.5DEG
 Test Speed: HIGH
 Temperature:25.3DEG
 Operators:DAMIN
 Test Date:23 September 2017

γ Range: 0 - 180DEG
 γ Interval: 1.0DEG
 Test System:EVERFINE GO-2000A_V1 SYSTEM V2.0.351
 Humidity:65.0%
 Test Distance:7.580m [K=1.0000]
 Remarks:

ISOCANDELA DIAGRAM

NAME: 1.2M三防灯	TYPE:LED	WEIGHT:
SPEC.:	DIM.:	SERIAL No.:1
MFR.: EVERFINE	SUR.:	Shielding Angle:

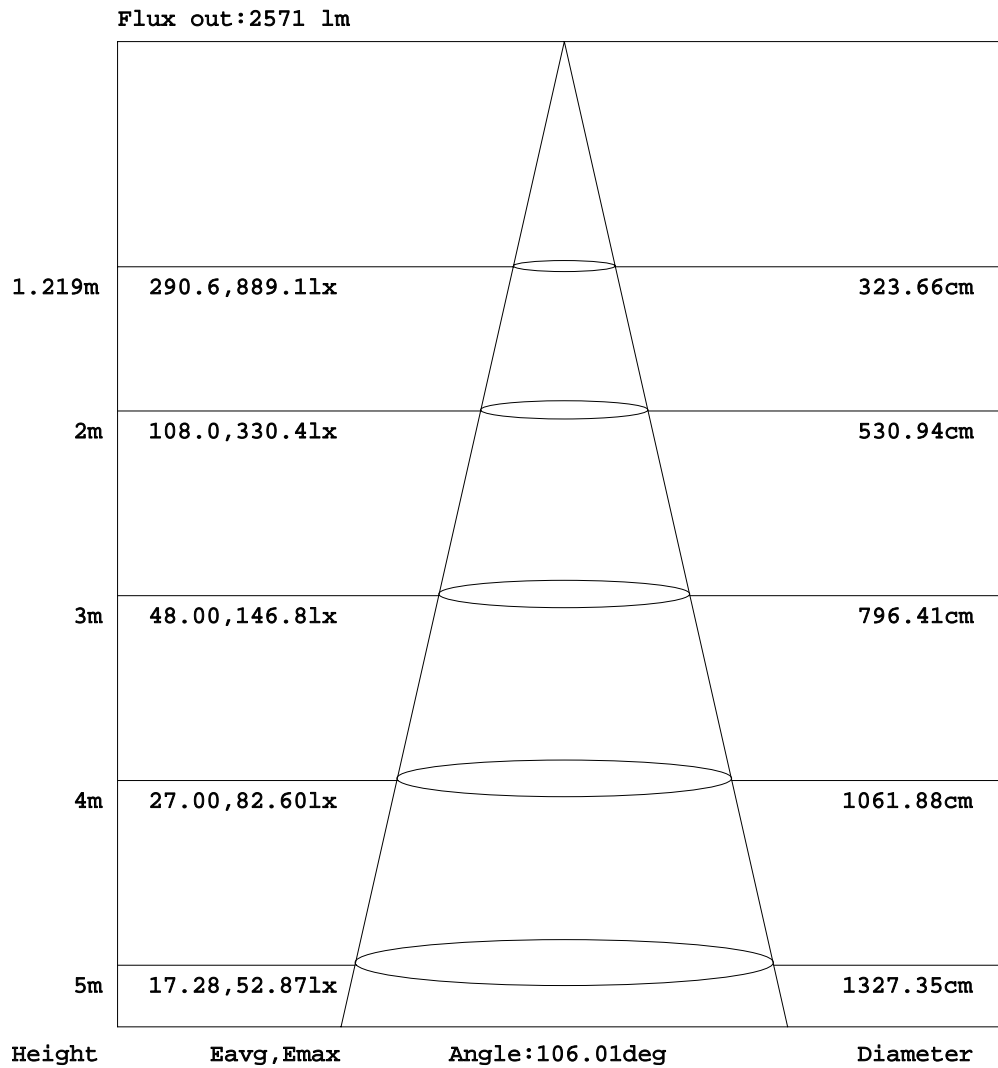


C Range: 0 - 360DEG
 C Interval: 22.5DEG
 Test Speed: HIGH
 Temperature: 25.3DEG
 Operators: DAMIN
 Test Date: 23 September 2017

γ Range: 0 - 180DEG
 γ Interval: 1.0DEG
 Test System: EVERFINE GO-2000A_V1 SYSTEM V2.0.351
 Humidity: 65.0%
 Test Distance: 7.580m [K=1.0000]
 Remarks:

AAI Figure

NAME: 1.2M三防灯	TYPE:LED	WEIGHT:
SPEC.:	DIM.:	SERIAL No.:1
MFR.: EVERFINE	SUR.:	Shielding Angle:



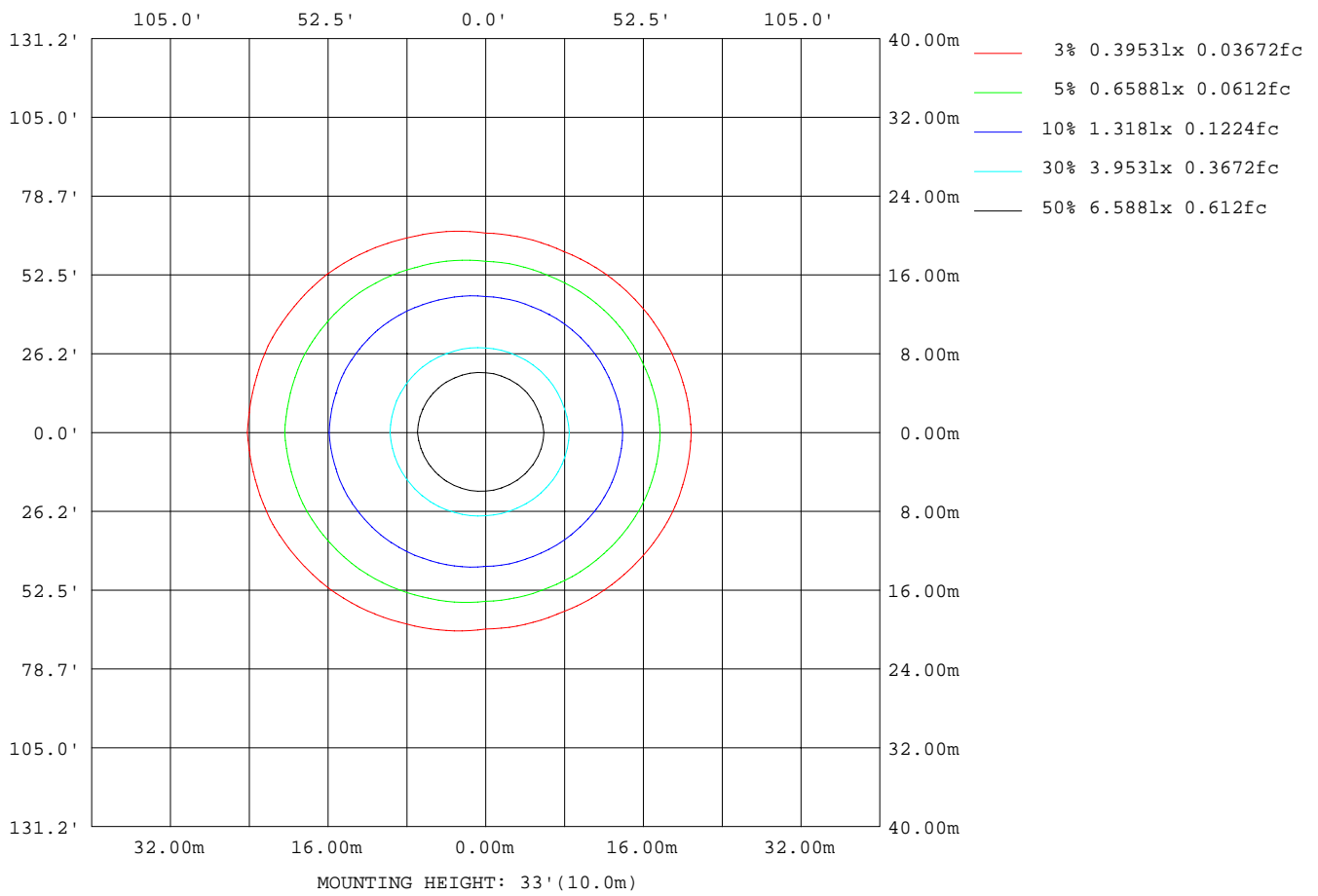
Note: The Curves indicate the illuminated area and the average illumination when the luminaire is at different distance.

C Range: 0 - 360DEG
 C Interval: 22.5DEG
 Test Speed: HIGH
 Temperature: 25.3DEG
 Operators: DAMIN
 Test Date: 23 September 2017

γ Range: 0 - 180DEG
 γ Interval: 1.0DEG
 Test System: EVERFINE GO-2000A_V1 SYSTEM V2.0.351
 Humidity: 65.0%
 Test Distance: 7.580m [K=1.0000]
 Remarks:

ISOLUX DIAGRAM

NAME: 1.2M三防灯	TYPE:LED	WEIGHT:
SPEC.:	DIM.:	SERIAL No.:1
MFR.: EVERFINE	SUR.:	Shielding Angle:



C Range: 0 - 360DEG
 C Interval: 22.5DEG
 Test Speed: HIGH
 Temperature: 25.3DEG
 Operators: DAMIN
 Test Date: 23 September 2017

γ Range: 0 - 180DEG
 γ Interval: 1.0DEG
 Test System: EVERFINE GO-2000A_V1 SYSTEM V2.0.351
 Humidity: 65.0%
 Test Distance: 7.580m [K=1.0000]
 Remarks:

LED Avg.L Report

NAME: 1.2M三防灯	TYPE:LED	WEIGHT:
SPEC.:	DIM.:	SERIAL No.:1
MFR.: EVERFINE	SUR.:	Shielding Angle:

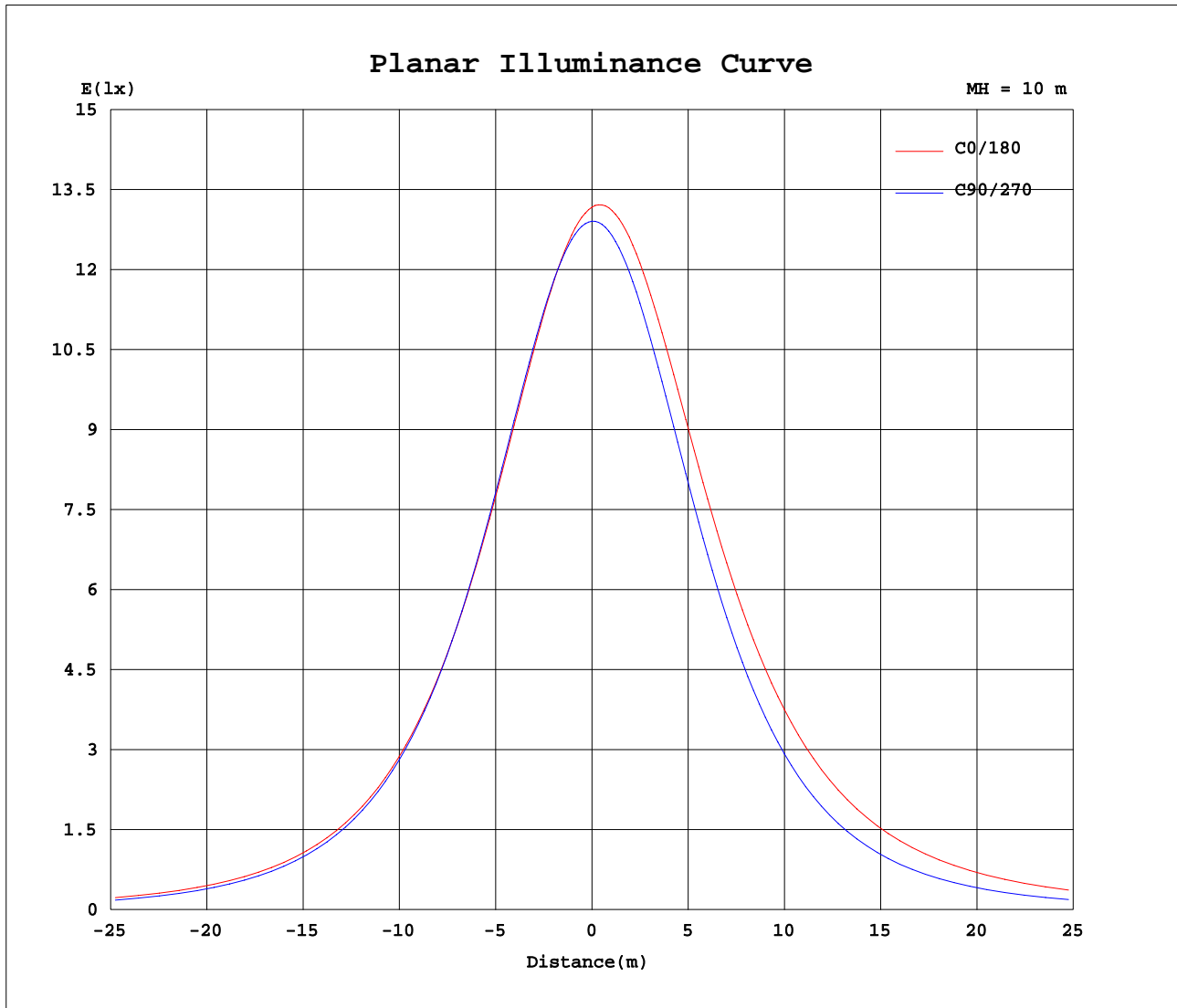
AvgL	cd/m2
L_0~180(65)av	14560
L_0~180(75)av	17565
L_0~180(85)av	36428
L_90~270(65)av	9856
L_90~270(75)av	8083
L_90~270(85)av	2803
L_45(65)av	12340
L_45(75)av	13520
L_45(85)av	24191

Standard: GB/T 29293-2012

C Range: 0 - 360DEG
 C Interval: 22.5DEG
 Test Speed: HIGH
 Temperature:25.3DEG
 Operators:DAMIN
 Test Date:23 September 2017

γ Range: 0 - 180DEG
 γ Interval: 1.0DEG
 Test System:EVERFINE GO-2000A_V1 SYSTEM V2.0.351
 Humidity:65.0%
 Test Distance:7.580m [K=1.0000]
 Remarks:

Planar Illuminance Curve



C Range: 0 - 360DEG
 C Interval: 22.5DEG
 Test Speed: HIGH
 Temperature: 25.3DEG
 Operators: DAMIN
 Test Date: 23 September 2017

γ Range: 0 - 180DEG
 γ Interval: 1.0DEG
 Test System: EVERFINE GO-2000A_V1 SYSTEM V2.0.351
 Humidity: 65.0%
 Test Distance: 7.580m [K=1.0000]
 Remarks:

LUMINOUS DISTRIBUTION INTENSITY DATA

NAME: 1.2M三防灯	TYPE:LED	WEIGHT:
SPEC.:	DIM.:	SERIAL No.:1
MFR.: EVERFINE	SUR.:	Shielding Angle:

Table--1

UNIT: cd

C(DEG) γ (DEG)	0	22.5	45	67.5	90	112.5	135	157.5	180	202.5	225	247.5	270	292.5	315	337.5			
0	1317	1306	1298	1294	1291	1288	1285	1282	1317	1306	1298	1294	1291	1288	1285	1282			
5	1292	1281	1276	1278	1281	1286	1290	1293	1331	1318	1307	1297	1287	1277	1268	1259			
10	1257	1247	1243	1248	1257	1270	1283	1293	1334	1319	1304	1286	1269	1252	1238	1227			
15	1214	1203	1200	1207	1221	1242	1263	1281	1324	1308	1288	1262	1238	1215	1198	1185			
20	1162	1151	1147	1155	1173	1201	1232	1259	1304	1286	1259	1225	1194	1167	1148	1134			
25	1103	1091	1085	1093	1113	1149	1190	1225	1273	1253	1219	1176	1138	1108	1089	1076			
30	1038	1025	1016	1022	1045	1087	1137	1182	1232	1210	1169	1116	1072	1039	1023	1011			
35	967	954	941	945	968	1017	1077	1130	1183	1158	1110	1048	997	964	950	941			
40	892	878	862	862	884	940	1009	1071	1125	1097	1042	971	914	881	871	867			
45	813	798	778	774	796	857	935	1005	1060	1030	968	887	825	793	788	788			
50	731	716	692	683	703	769	857	934	990	958	889	799	732	702	702	707			
55	647	631	603	589	606	678	774	859	915	880	805	706	633	607	613	623			
60	562	545	513	493	507	585	689	780	835	799	718	611	532	510	523	538			
65	479	461	424	397	405	490	602	697	752	714	628	513	428	411	432	454			
70	401	381	338	302	303	395	514	613	666	627	537	416	322	314	345	377			
75	331	310	261	213	203	301	426	527	579	540	446	319	216	221	267	307			
80	270	249	196	135	101	213	341	444	493	454	358	227	109	140	202	247			
85	222	202	148	80.3	19.4	136	264	366	413	375	279	147	29.4	82.9	153	200			
90	187	169	118	52.1	2.37	81.9	200	297	340	304	213	89.4	2.40	53.4	121	168			
95	160	144	98.2	38.5	3.60	55.5	153	239	277	245	163	60.3	3.54	39.8	100	143			
100	140	125	79.5	32.9	5.72	46.9	123	196	228	200	130	50.3	6.02	34.7	83.0	125			
105	120	108	69.9	31.0	8.16	44.6	105	164	190	167	110	47.4	8.68	32.4	72.0	108			
110	112	98.8	62.0	29.4	10.8	43.7	94.7	141	160	143	98.9	46.0	11.5	30.0	66.6	98.4			
115	103	88.2	54.0	27.5	13.5	43.5	87.9	126	141	128	91.5	45.5	14.4	28.1	59.9	89.4			
120	93.6	79.1	49.0	26.2	16.2	43.7	82.2	115	126	117	85.2	45.4	17.2	27.5	52.5	81.8			
125	85.6	72.5	44.7	25.5	18.8	44.2	77.1	105	113	107	79.7	45.6	19.9	26.9	47.0	73.7			
130	78.3	59.1	41.1	25.2	21.3	44.7	72.7	96.7	101	98.3	74.7	45.9	22.5	27.1	43.5	63.8			
135	71.1	54.6	37.7	25.4	23.5	45.1	68.8	88.9	91.7	90.0	70.3	46.0	24.8	27.7	40.3	54.6			
140	64.0	48.5	34.9	26.1	26.2	45.2	65.2	81.8	83.9	82.3	66.3	45.8	26.9	28.4	37.3	48.7			
145	58.7	43.0	32.5	28.5	29.8	45.5	62.0	75.3	76.2	74.6	62.1	45.8	29.9	29.7	35.2	43.8			
150	53.6	38.1	31.7	31.7	33.4	45.6	58.8	69.4	67.6	66.8	57.6	45.9	33.2	32.2	34.1	39.2			
155	49.6	34.8	33.7	34.7	36.8	45.6	55.5	63.9	59.2	61.1	54.2	45.7	36.4	34.8	34.6	36.6			
160	46.5	32.6	36.2	37.7	39.7	45.8	53.0	58.5	54.6	55.8	51.5	46.0	39.6	37.9	36.2	34.6			
165	43.2	32.1	38.2	40.5	42.4	46.1	50.2	54.1	48.2	51.5	48.8	46.3	42.2	40.5	38.6	33.5			
170	35.7	35.3	40.7	42.7	44.5	46.3	48.5	50.1	39.1	46.9	46.8	46.7	44.3	42.6	41.4	35.9			
175	31.2	39.7	42.6	44.9	46.2	46.8	47.5	47.6	32.3	42.4	45.5	47.2	46.1	44.8	43.7	40.2			
180	31.8	43.8	44.2	46.9	47.2	47.0	46.5	45.3	32.1	43.4	44.4	47.7	47.6	47.0	46.5	45.2			

C Range: 0 - 360DEG
 C Interval: 22.5DEG
 Test Speed: HIGH
 Temperature:25.3DEG
 Operators:DAMIN
 Test Date:23 September 2017

γ Range: 0 - 180DEG
 γ Interval: 1.0DEG
 Test System:EVERFINE GO-2000A_V1 SYSTEM V2.0.351
 Humidity:65.0%
 Test Distance:7.580m [K=1.0000]
 Remarks: