

LINEAR UFO

Your new LED Highbay solutions

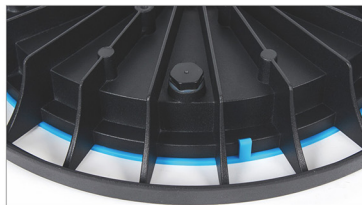


Linear IC driver | 3 YEARS WARRANTY | **ALU** | **IP65**
Isolated driver | 5 YEARS WARRANTY

NOTHING SEEK, NOTHING FIND

Designed with excellent features

- Full Die-casting aluminum shell, intergrated molding with good heat dissipation
- Ultrathin design, smart and high cost performance. also save the packing volume
- Reliable LED chip SMD2835 with high lumen efficiency 110lm/w
- Different driver solution to meet more markets requirements. Linear IC/Non-isolated
- Unique breather design to keep balance of air pressure inside&outside
- With PC frame to make double assurance of the glued glass cover and have a special nice look
- Good quality lifting hook with stainless steel material
- IP65
- Linear driver with 3years warranty, Non-isolated driver with 5years warranty
- CE, RoHS approval
- Wide application: warehouse, workshop, factories, parking...etc



Unique breather valve
to keep balance of air pressure
inside&outside



PC frame to make double assurance
of the glued glass cover and have a
special nice appearance color of PC
frame can be customized



More option with Non-isolated driver
to reach 5years warranty

Item Code	Voltage	Power (W)	Lumen Efficiency (±10%)	CRI	Power Factor	Beam Angle	IP	Product Size (mm)
01HB-WB-150W	AC220-240V	150W	110lm/w	80	0.9	120°	65	φ340X50
	AC100-265V		130lm/w					
01HB-WB-250W	AC220-240V	250W	110lm/w	80	0.9	120°	65	φ440X50
	AC100-265V		130lm/w					