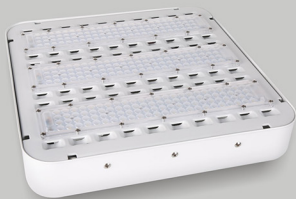


# TEXACO



- Full die casting aluminum housing with good heat dissipation
- Clear appearance with high quality 304 stainless steel screw
- High strength, corrosion resistance, impact resistance
- Each chip with high quality lens to reach high light transmission
- High quality wire connector
- Different installation: recessed, surface mount, with holder
- IP65
- 5 years warranty
- CE, RoHS approval
- Widely used in Gas station, toll station, indoor parking lot, factories, plaza, outdoor advertising...etc

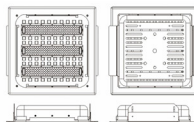
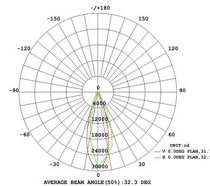


## Gas Station LED LIGHT

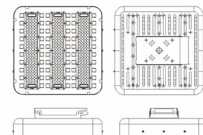
Suspended



Recessed



01GS-370RE



01GS-370SU

Item Code	Voltage	Power (W)	Lumen Efficiency (±10%)	CRI	Power Factor	Beam Angle	IP	Product Size (LxWxH/mm)
01GS-370RE-100W	AC175-265V	100W	110lm/w 125lm/w	80	0.9	45°/90°	65	420x420x115
01GS-370RE-150W	AC175-265V	150W	110lm/w 125lm/w	80	0.9	45°/90°	65	420x420x115
01GS-370RE-200W	AC175-265V	200W	110lm/w 125lm/w	80	0.9	45°/90°	65	420x420x115
01GS-370SU-100W	AC175-265V	100W	110lm/w 125lm/w	80	0.9	45°/90°	65	345x345x115
01GS-370SU-150W	AC175-265V	150W	110lm/w 125lm/w	80	0.9	45°/90°	65	345x345x115
01GS-370SU-200W	AC175-265V	200W	110lm/w 125lm/w	80	0.9	45°/90°	65	345x345x115